



BioAg
Country



Autumn 2026

BioAgPhos is the best option for Aussie Farmers

*It's been an interesting year,
with global issues meaning
fertiliser supply is tight and
prices are high.*

*At BioAg, our message is
simple – there is another way.*

Our **BioAgPhos**[®] range is in stock now,
and our pricing remains stable.

More importantly, **BioAgPhos** is designed
to deliver long-lasting, plant-available
phosphorus that works with your soil
biology, not against it.



Anton Barton
Founder & Managing Director, BioAg Pty Ltd

This approach supports stronger soil health, improved nutrient efficiency and better long-term farm profitability.

Now is the time to rethink your fertiliser program.

BioAg is a system that builds resilience into your soils and your business.

Hear from BioAg Founder and Managing Director, Anton Barton, on the benefits of using **BioAgPhos**, particularly considering current global issues.

[Watch Anton's video](#)

Measuring phosphorus in soils when using natural phosphate fertilisers

The Olsen and Colwell soil tests are strongly correlated when using water soluble/chemical fertilisers. However, these tests will likely underestimate plant available phosphorus (P) when fertilising with RPR or *BioAgPhos*.

A key part to improving farm productivity is measuring soil P levels. P is an important element for normal plant growth and is often limiting nutrient for plants. There could be different reasons in the agricultural practice, but mainly this is due to the challenges in the management of soil phosphorus.

Traditional Olsen and Colwell tests will typically underestimate plant available P when using a RPR based fertiliser. When transitioning to or having applied fertilisers containing RPR it is important to analyse soils using Bray 1, Bray 2 and PBI.

By assessing these three parameters along with the soil content of antagonists; iron, aluminium, calcium and beneficial soil components sulphur and organic carbon levels, assessments can be made on plant available P, and by performing year on year tests P accumulation or consumption can be monitored.



[Click for BioAg's White Paper](#)

Inputs for maximum yield

These yield maps from a canola demonstration block near Brocklesby, NSW, show the impact of BioAg biostimulants across two very different years.

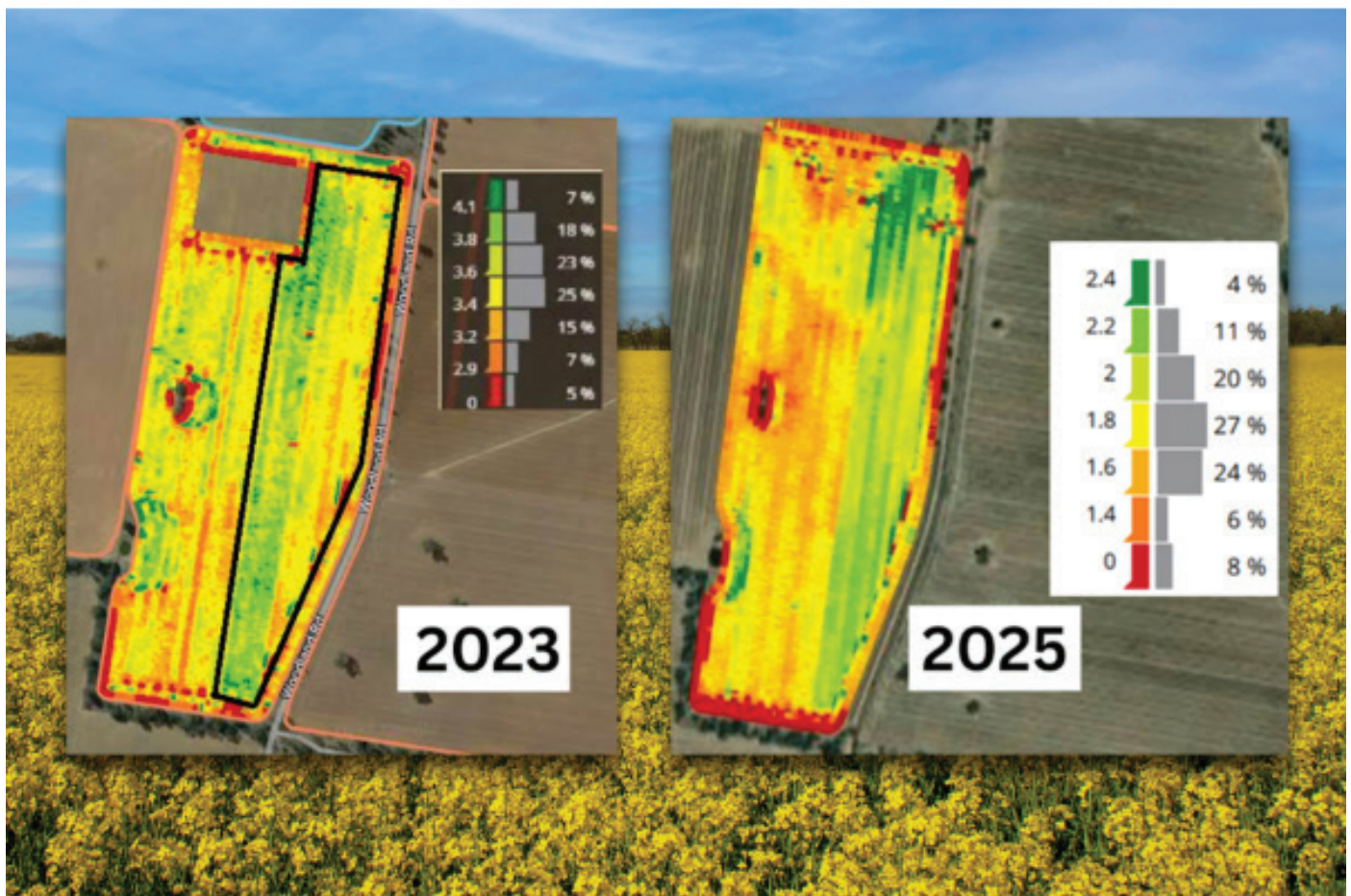
In 2023, with good rainfall, treated areas delivered improved yield performance.

In 2025, under much tougher, low rainfall conditions, those same treated zones still outperformed the rest of the paddock.

By applying **Soil & Seed**[®] at sowing and **Balance & Grow**[®] as a foliar, farmers are supporting nutrient cycling, improving moisture retention, and building healthier, more resilient crops.

It's a practical approach that delivers — in good seasons and challenging ones.

Include BioAg biostimulants in your program this season and grow your profits.



[Click for more on BioAg's Biostimulants](#)

Biostimulants – the key to top crops

Soil & Seed improves soil health, supports nutrient cycling, and drives consistent plant performance.

In particular this year, with urea being scarce and very costly, it pays to maximise the effectiveness of any, and all applied water-soluble nutrients – ***Soil & Seed***[®] does just that!

It's all about creating a more resilient system — healthier soils, improved efficiency, and better long-term productivity.



Get it right at sowing and reap the rewards at harvest – now is the time to get your ***Soil & Seed***. Next in your top crop arsenal is ***Balance & Grow*** and ***Fruit & Balance*** as the crop progresses.

Hear from Jock Vidler on his BioAg program for maximum results in broadacre cropping.

But *Soil & Seed* isn't just a key component in broadacre cropping. For perennial horticulture, *Soil & Seed* can play a major role in creating resilient crops that produce consistently higher yields. Whether it is in the vineyard or the orchard, look to *Soil & Seed* to improve your results.

[Hear from Jock Vidler](#)

RumiMate making its mark

With more and more farmers shifting to containment feeding of stock, RumiMate is becoming the product of choice to ensure enhanced digestion, improved animal production and animal wellbeing.

RumiMate is formulated to stimulate microbial activity in the animal's digestive tract. It enhances the natural replenishment of digestive microflora that occurs through grazing or foraging. This fermented liquid tonic contains a rich source of vitamins, minerals, proteins, enzymes, amino acids and carbohydrates.

RumiMate helps to optimise rumen function which improves feed utilisation and nutrient conversion. It also aids stressed animals during feed changes, heat stress and transportation, resulting in better, healthier stock.

**20+ years. 2,500 lambs a year.
One product he keeps coming back to.**

Alan Johnston is a mixed farmer at Naradhan, feedlotting on average 2,500 lambs annually — and he's been using **RumiMate** for more than 20 years.

Why?

Because it works – and because it's easy.

Alan says the ease of application is a huge bonus when you're managing livestock at scale. Simple, efficient solutions matter when there's plenty to get done.

When a product has been part of a farming system for two decades, that says something.



**Alan Johnston – Farmer, Naradhan NSW
BioAg RumiMate customer for over 20 years**

[Click to watch the video & hear Alan share his experience](#)

Keeping informed on latest GRDC Research

Earlier this year, our Central West NSW Area Manager, Sean Marney, attended the GRDC Research Update in Dubbo to stay across the latest research impacting local farmers.

Staying informed means we can continue supporting farmers with practical, science-backed solutions suited to real conditions.



A few key takeaways:

- Legumes in rotation can reduce reliance on synthetic nitrogen, improve weed control flexibility and offer competitive returns.
- Phosphorus placement matters — research continues to show shallow P placement is generally more effective than deep applications in NSW conditions, where subsurface moisture can limit uptake.
- Pulse opportunities in Northern NSW are growing, though disease management and market risk need careful consideration.

Find your local Area Manager here

